

QUEENSLAND'S #1
HOME BUILDER
AND #8 NATIONWIDE

IMPACT HOMES

\$582,450

FULL TURNKEY
HOUSE & LAND PACKAGE



EILDON

4 Beds 2 Baths 2 Car Spaces

Home Price: \$276,950

Home Size: 18 sq

LOT 8

Lot Size: 341sqm

Land Price: \$305,500

Fremantle Avenue Cranbourne East, VIC

STANDARD INCLUSIONS

- Face brick veneer external walls
- Traditional concrete tile roof
- Colorbond fascia and gutter
- 2.44m internal ceiling height
- LED downlights throughout house
- TV antenna for up to three hard wired TV points
- 20 litre gas hot water service



For further information please Contact

Us on:

- ✓ M: 0484 398 888
- ✓ M: 0451 118 888
- ✓ E: admin@impactbdm.com

THANK YOU

QUEENSLAND'S #1
HOME BUILDER
AND #8 NATIONWIDE

IMPACT HOMES

QUEENSLAND'S #1
HOME BUILDER
AND #8 NATIONWIDE

IMPACT HOMES

\$582,450

FULL TURNKEY
HOUSE & LAND PACKAGE

EILDON

Home Price: \$276,950

Land Price: \$305,500

Home Size: 18 sq

Lot Size: 341 sqm

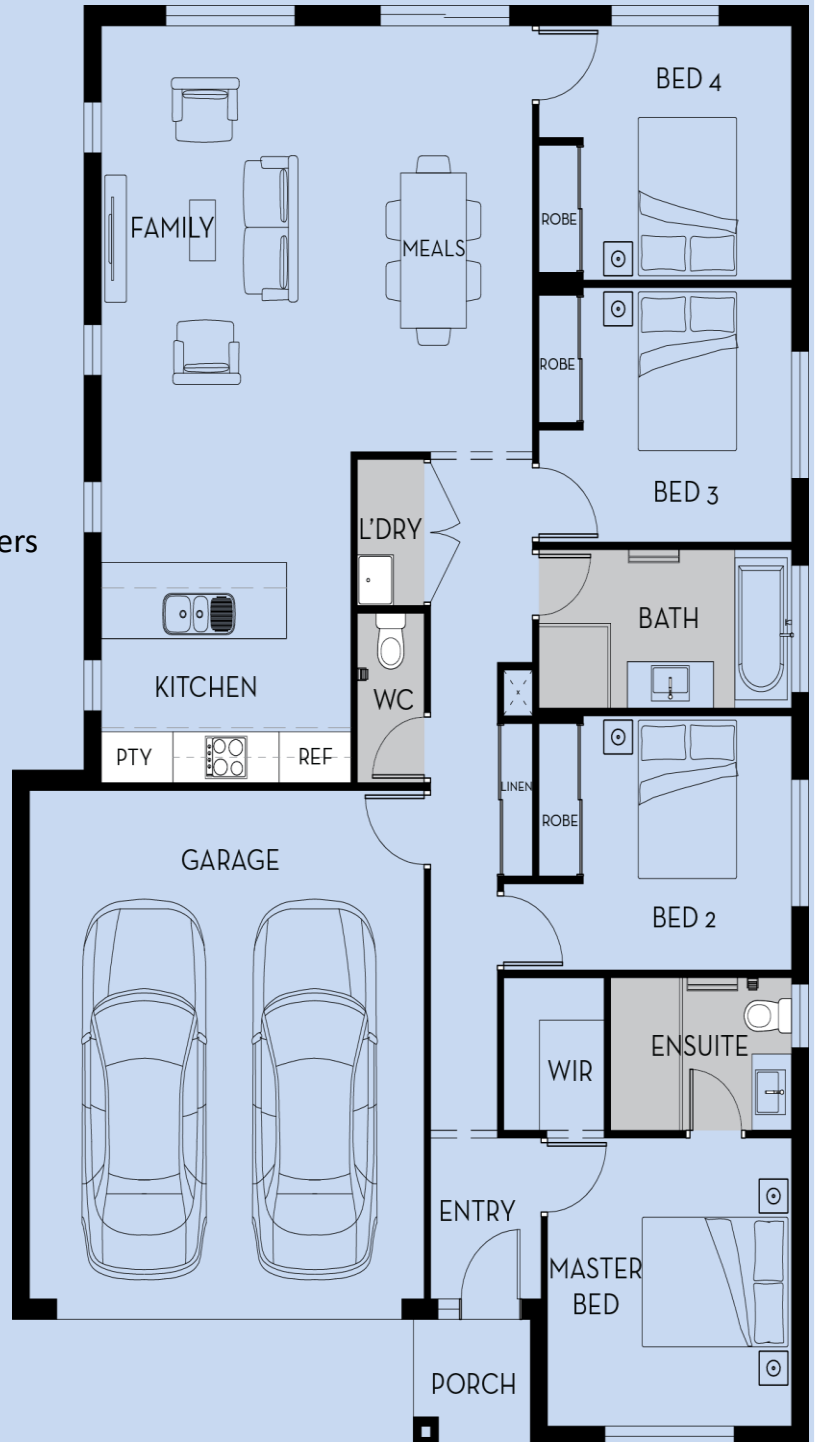
STANDARD INCLUSIONS CONTINUES

- 20mm engineered stone bench top
- Laminate kitchen cabinet doors and drawers
- Cabinet height 2.2m with paint grade MDF
- Stainless steel dishwasher
- Stainless steel 60cm oven
- Stainless steel 60cm slide-out range hood
- Stainless steel 60cm four burner gas stove
- Chrome sink mixer
- Stainless steel sink
- Ceramic tile splashback
- Gas ducted heating
- One reverse split system inverter air conditioners
- Roller blinds to all windows
- sliding doors excluding wet areas
- Fly screens to all opening windows
- Coloured concrete driveway
- Porch and alfresco
- Metal letterbox
- Landscape front, back and rear
- And Much More

For further information please Contact Us on:

- ✓ M: 0484 398 888
- ✓ M: 0451 118 888
- ✓ E: admin@impactbdm.com

THANK YOU



^ Terms and conditions apply, please contact us for more details. This offer only applies to lots currently available for sale.

QUEENSLAND'S #1
HOME BUILDER
AND #8 NATIONWIDE

IMPACT HOMES